

Elport EU System Proposal (Dz-MON)

www.elporteu.com

Introduction ... *Dz-MON*

Dz-MON is ideally suited for digital wall applications in critical command and control, data visualization.

TFT-LCD delivers the best image quality and **elport**'s advanced system integration technology achieves reliability and low cost-of-ownership.

Dz-Mon has high-resolution range from XGA to UXGA for each and can be installed in limited space due to its super slim design.



Features ... *Dz-MON*



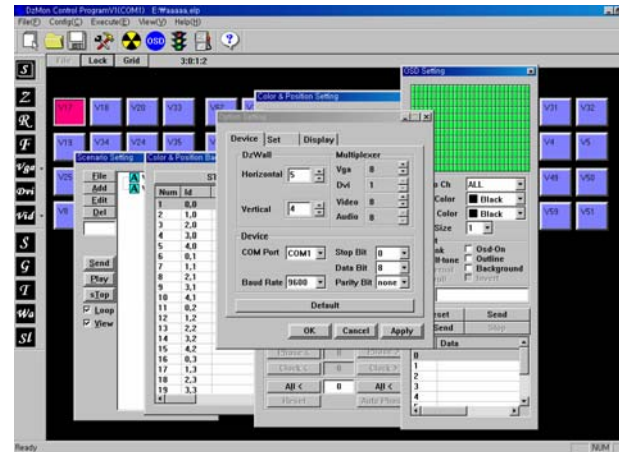
Hardware

- ▶ Multiple input sources - Video (up to 128 channels), RGB (up to 16 channels), and DVI (1:1)
- ▶ No Frame Skip
- ▶ Resolution Improvement - Image Interpolation, Double Buffering
- ▶ Simple Connection to other Surveillance Devices
- ▶ "All-Built-in-ONE" Design - RGB & Video Matrix Switchers
- ▶ Video Text Color OSD(On Screen Display) – Optional
- ▶ Small Form Factor - 67~87mm Thickness Stand, Wall-Mounting Type Installation

Features ... *Dz-MON*

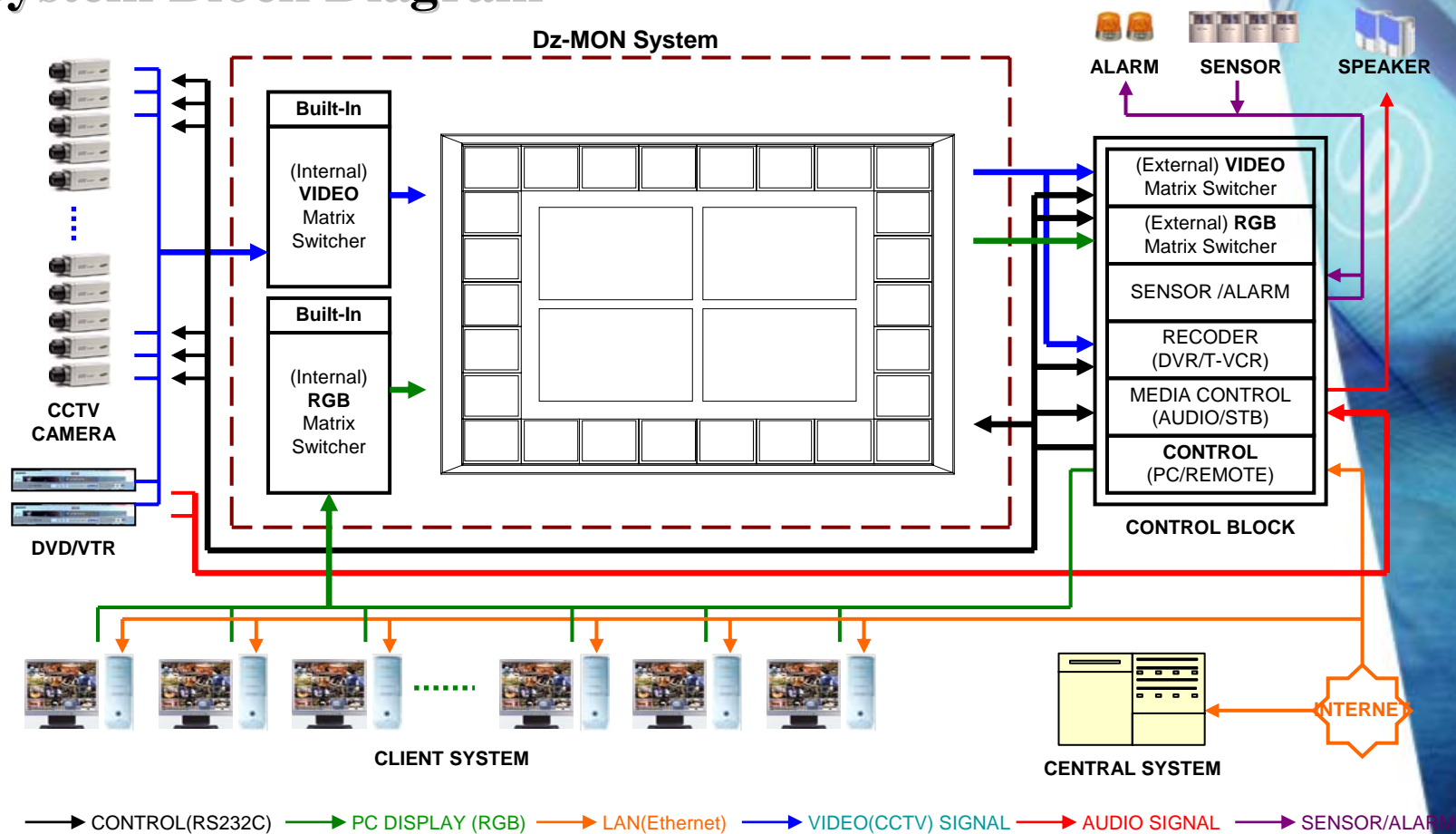
Software

- ▶ User-friendly Interface
- ▶ “Drag-and-Drop” Display
- ▶ Remote Control via Network
- ▶ Time Scheduling
- ▶ Text Generating
- ▶ Input Signal Switching
- ▶ Update via Internet
- ▶ Freeze Frame



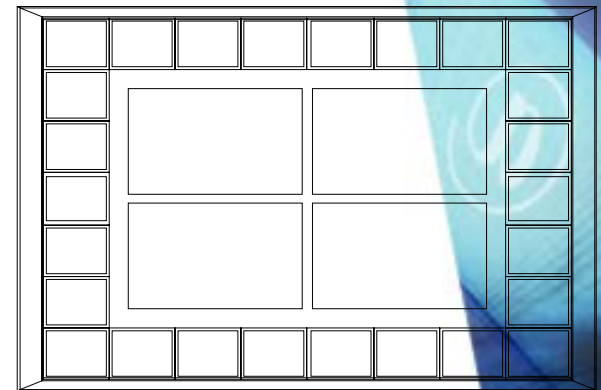
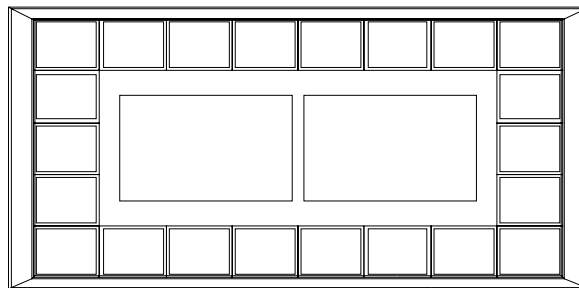
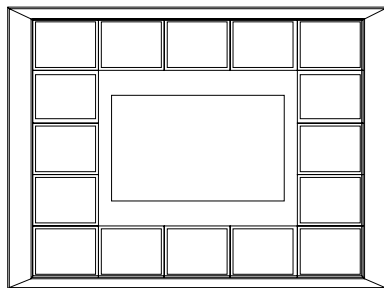
System ... Dz-MON

System Block Diagram



System ... *Dz-MON*

Panel Composition



Dz-MON 15 / 40 – 16 / 01

- Number of small panels
- Number of large panels
- Size of small panel (diagonal, 15/17/19)
- Size of small panel (diagonal, 26/32/40/42)

System ... Dz-MON

Technical Specifications

Dz-MON System Specification		Description					
		15/40 Type		17/40 Type		19/40 Type	
		Model	Dimension (WxHxD, mm)	Model	Dimension (WxHxD, mm)	Model	Dimension (WxHxD, mm)
		15/40-16/01	1918 x 1411 x 87	17/40-14/01	2178 x 1326 x 87	19/40-14/01	2281 x 1452 x 87
		15/40-22-02	2919 x 1411 x 87	17/40-20-02	2949 x 1326 x 87	19/40-18/02	3093 x 1452 x 87
		15/40-26/04	2919 x 1925 x 87	17/40-24/04	2949 x 1928 x 87	19/40-22/04	3093 x 2116 x 87
*The Size and configuration of Dz-MON are changeable according to customer's request.							
Input	VIDEO	8/16/24/32/40/48 channels (Optional, up to 128 channels) - COMPOSITE(NTSC/PAL)					
	PC RGB	1 channel (Optional, up to 16 channels) - PC ANALOG RGB					
Output	VIDEO	Optional - LOOP-BACK output to Video Input					
	PC RGB	Optional - LOOP-BACK output to RGB Input					
Control Port		1 Input (RS-232C)					
		Optional - LOOP-BACK output to RS-232C Input					
Power Supply Voltage		AC 100 ~ 240V (50~60Hz)					
Operating Temperature		0 ~ 50°C					
		Panel Specifications					
Type		15 inch	17 inch	19 inch	40 inch		
Resolution		XGA 1024(H)x768(V)	SXGA 1280(H)x1024(V)	SXGA 1280(H)x1024(V)	WXGA 1280(H)x768(V)		
Number of Colors		16.2M	16.7M	16.7M	16.7M		
Pixel Pitch(mm)		0.397	0.294	0.294	0.681		
Brightness		250cd/m ²	250cd/m ²	250cd/m ²	450cd/m ²		
Contrast Ratio		250:1	300:1	500:1	500:1		
Viewing Angle		130(U/D)/110(L/R)	130(U/D)/150(L/R)	170(U/D)/170(L/R)	170(U/D)/170(L/R)		
Light Source		4 CCFL	4 CCFL	4 CCFL	20 CCFL		
Power Consumption		22W	32W	48W	200W		



System ... *Dz-MON*

Thank you very much.